



Sky Dock OFFICE | Berlin

Sky Dock Office Berlin | work stages 3-5 | 16.200m² total space | client: BEOS | completion: January 2019

Reconstruction of the three upper floors of an existing warehouse for office use with a mixture of team offices and open office, taking into account the corporate design of the user. In order to provide the interior surfaces with daylight, two new atriums are cut into the existing building across all three floors. A roof terrace with a spectacular view of Lake Tegel is also part of the building.

IOX

Architekten



IOX Architekten GmbH

Schönhauser Allee 26, 10435 Berlin

Telefon +49 (0)30 4431966-0

www.iox-architekten.de | post@iox-architekten.de

IOX

Architekten



IOX Architekten GmbH

Schönhauser Allee 26, 10435 Berlin

Telefon +49 (0)30 4431966-0

www.iox-architekten.de | post@iox-architekten.de

IOX

Architekten



IOX Architekten GmbH

Schönhauser Allee 26, 10435 Berlin

Telefon +49 (0)30 4431966-0

www.iox-architekten.de | post@iox-architekten.de

IOX

Architekten



IOX Architekten GmbH

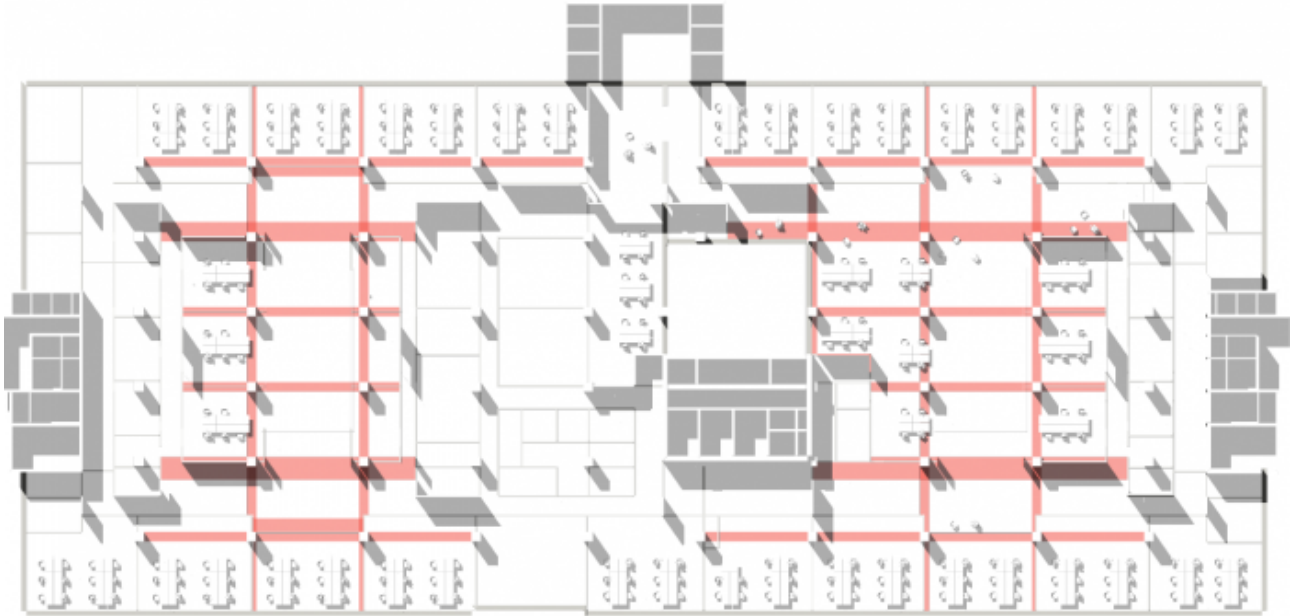
Schönhauser Allee 26, 10435 Berlin

Telefon +49 (0)30 4431966-0

www.iox-architekten.de | post@iox-architekten.de

IOX

Architekten



IOX Architekten GmbH

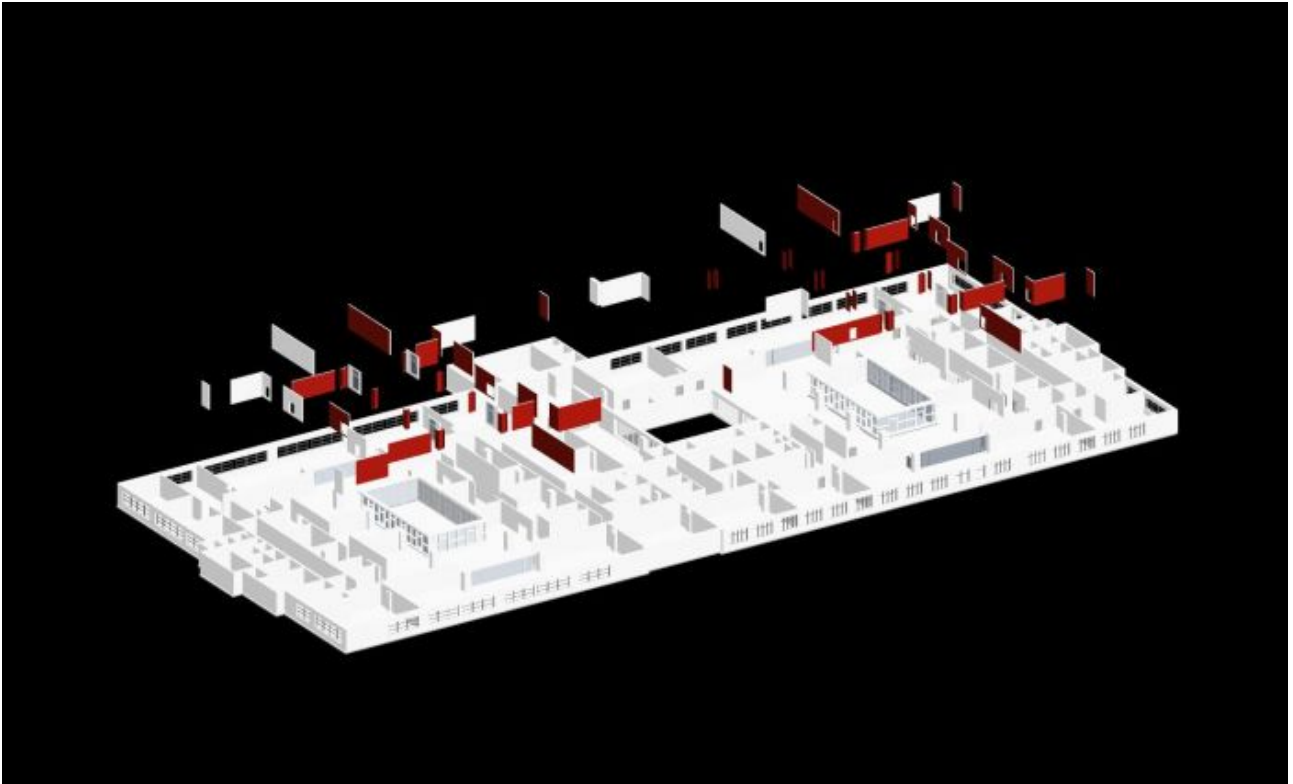
Schönhauser Allee 26, 10435 Berlin

Telefon +49 (0)30 4431966-0

www.iox-architekten.de | post@iox-architekten.de

IOX

Architekten



IOX Architekten GmbH

Schönhauser Allee 26, 10435 Berlin

Telefon +49 (0)30 4431966-0

www.iox-architekten.de | post@iox-architekten.de